

**VENTED SHUTTLE VALVE**

EXAMPLE V-491

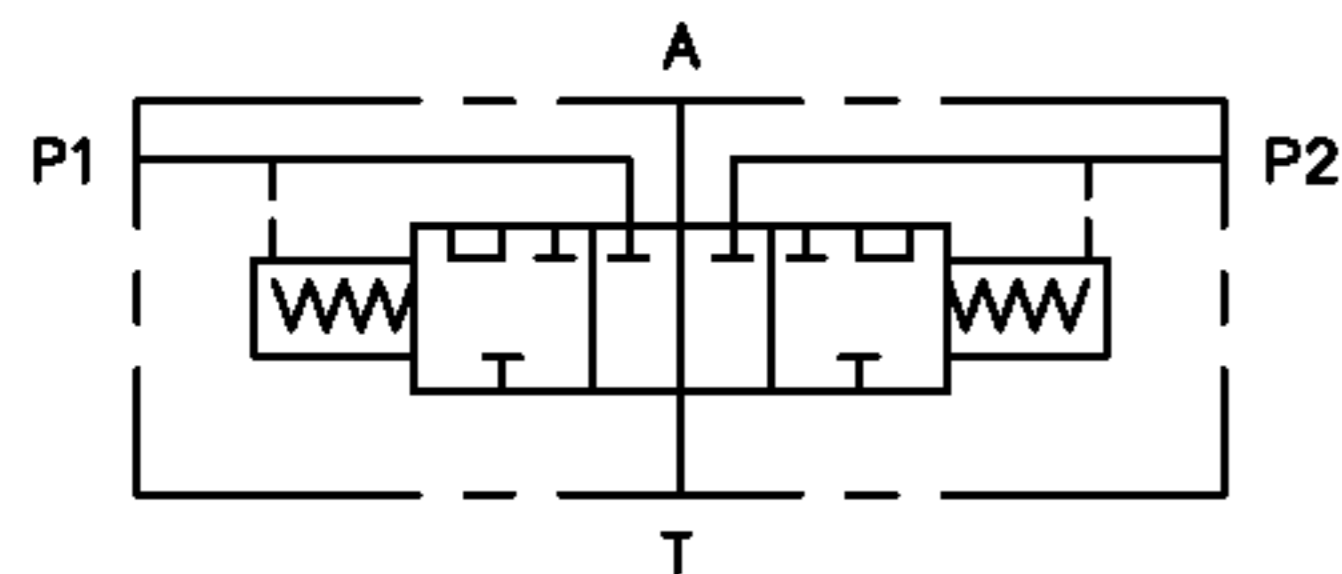
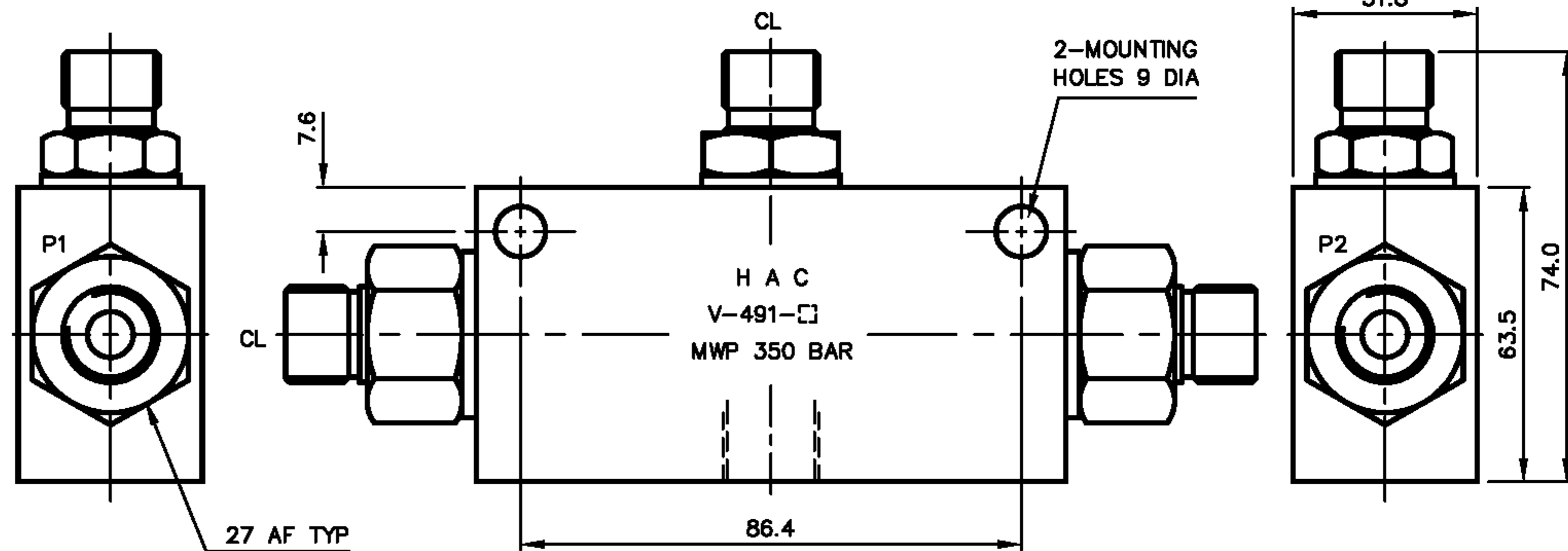
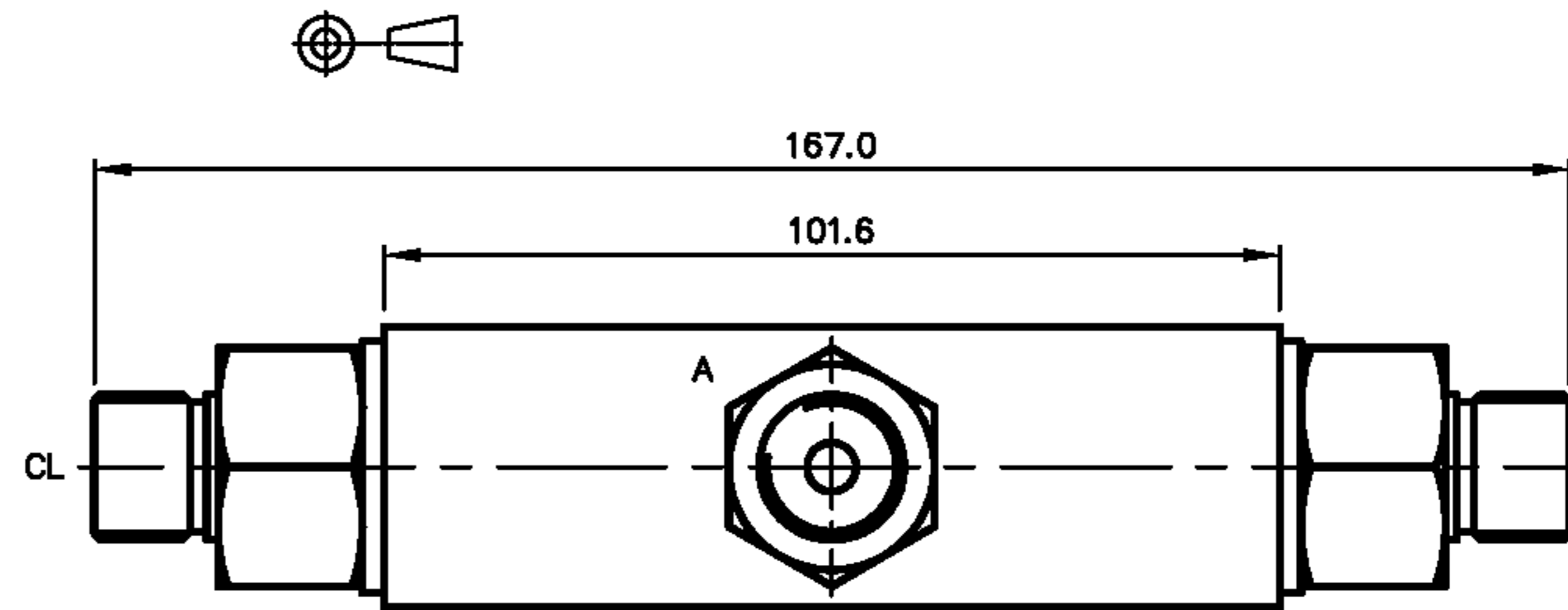
A DEFINITIVE PRESSURE MUST BE REACHED IN THE DRIVE DRIVE LINES BEFORE THE BRAKE IS RELEASED. THIS PRECLUDES SPURIOUS PRESSURES CAUSING THE BRAKE TO BE APPLIED.

MAX WORKING PRESSURE 350 BAR

**VALVE ORDERING INFORMATION**

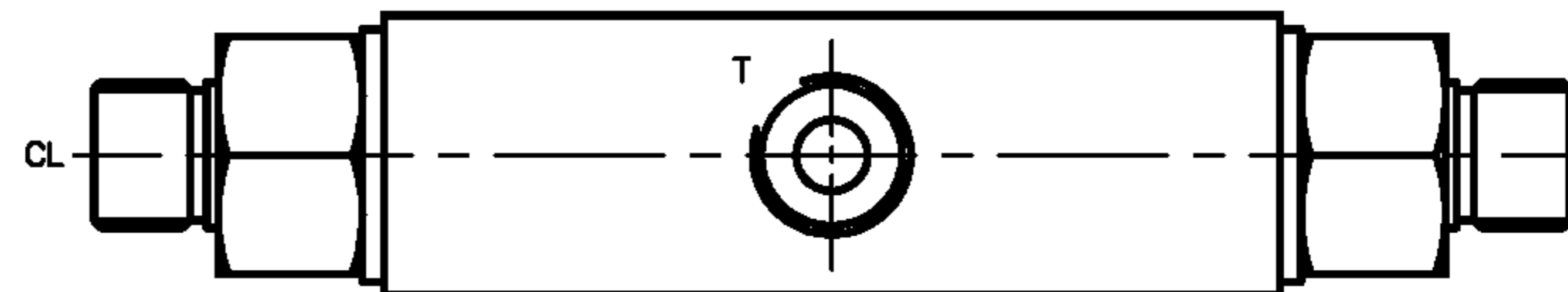
TYPE	PORTS
V-491-A	1/4 BSP (PL)
V-491-B	3/8 BSP (PL)

ALL DIMENSIONS IN MM



TYPICAL APPLICATION IS ON A BRAKE CIRCUIT WHERE THE BRAKE LINE IS VENTED NEUTRAL, ALLOWING THE BRAKE TO BE APPLIED.

THIS VALVE HAS A SPRING LOADED SHUTTLE WHICH MOVES OVER ONLY WHEN A PRE-DETERMINED PRESSURE IS REACHED. IN THE NEUTRAL POSITION THE OUTLET LINE 'T' IS CONNECTED TO TANK



VALVE TYPE VENTED SHUTTLE VALVE

DATE: 20/07/01  
ASSY: 6060  
SCALE: 1:1

TITLE INSTALLATION  
V-491-□

DRG NO 6061  
ISS A