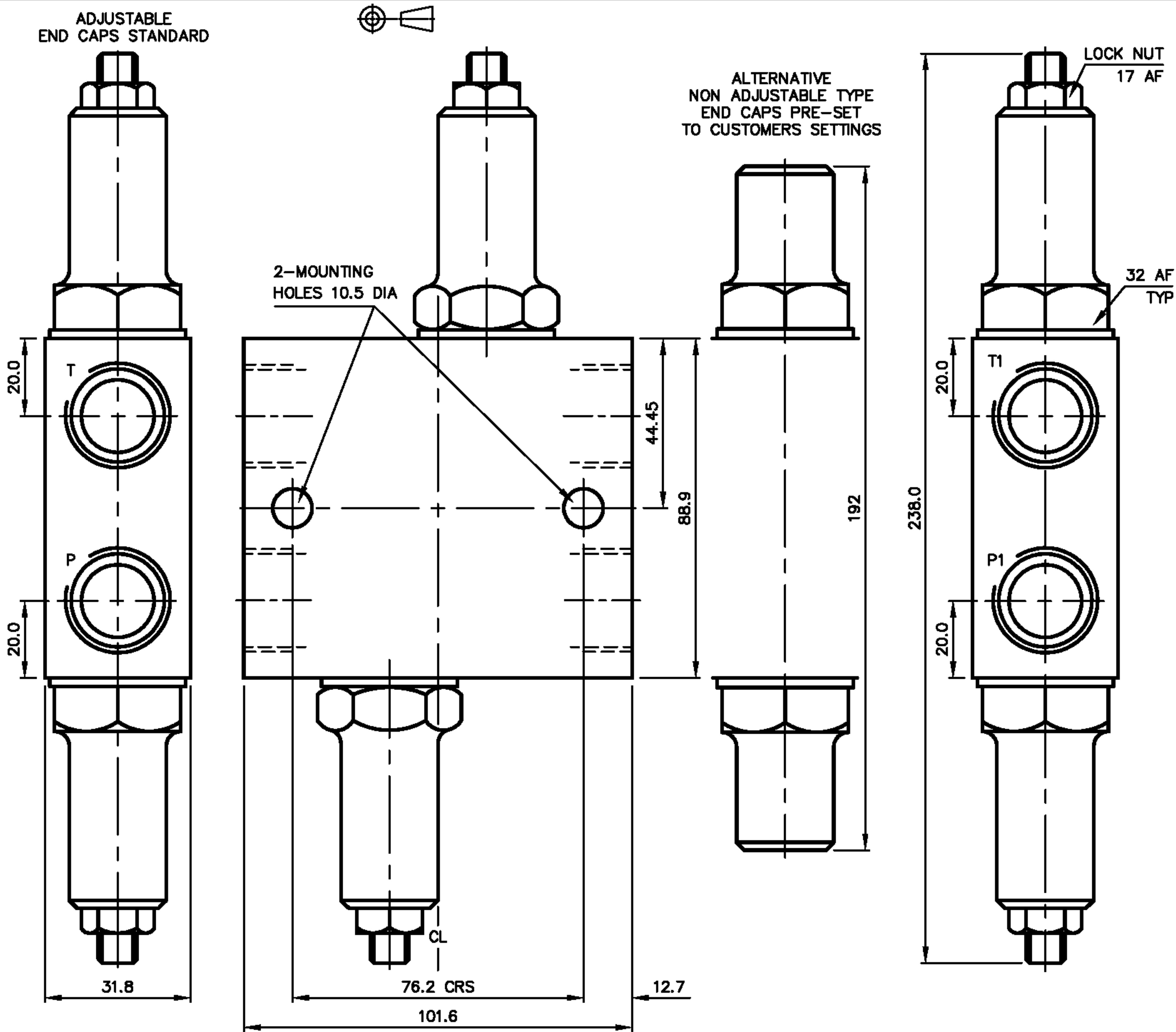
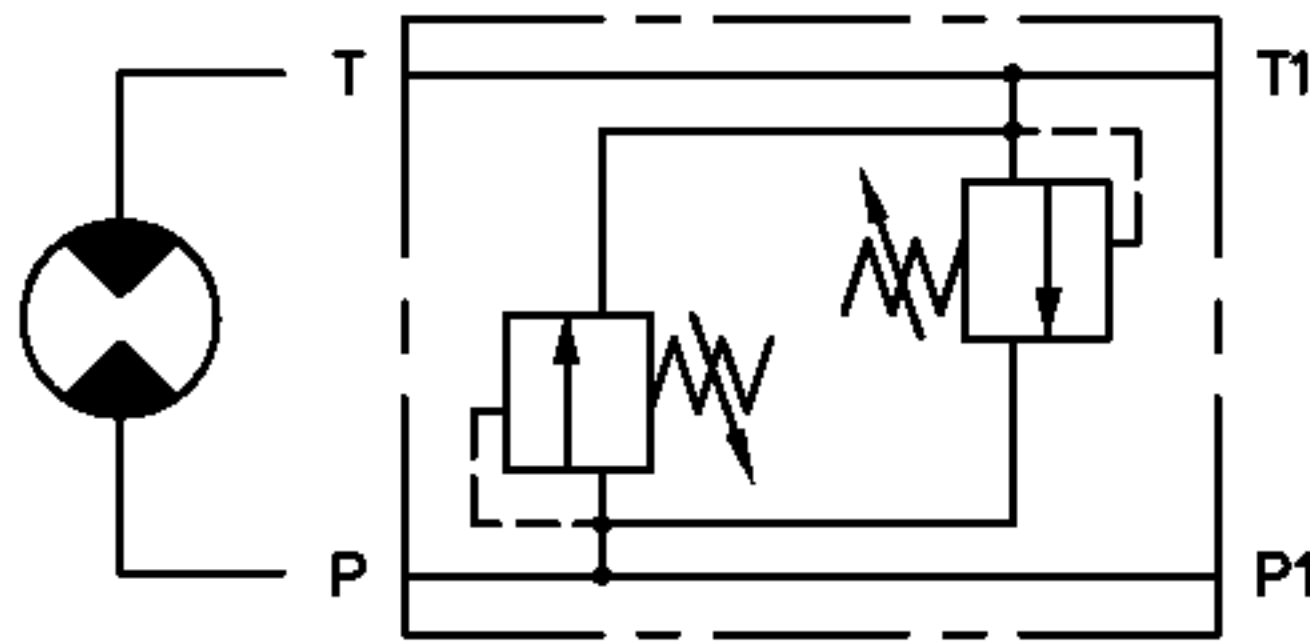


|   |  |
|---|--|
| <b>DUAL CROSSLINE RELIEF VALVE</b>        |  |
| EXAMPLE V-241-□                           |  |
| RELIEF PRESSURE RANGE AVAILABLE 0-210 BAR |  |
| RELIEF PRESSURE RANGE AVAILABLE 0-138 BAR |  |
| RELIEF PRESSURE RANGE AVAILABLE 0-55 BAR  |  |
| <b>MAX WORKING PRESSURE 275 BAR</b>       |  |

| VALVE ORDERING INFORMATION |              |
|----------------------------|--------------|
| TYPE                       | PORTS        |
| V-241-C                    | 1/2 BSP (PL) |
| V-241-D                    | 3/4 BSP (PL) |
| ALL DIMENSIONS IN MM       |              |



VALVE TYPE DUAL CROSS LINE RELIEF VALVE

DATE: 13/08/02  
 ASSY: 5495  
 SCALE: 0.95:1

TITLE INSTALLATION  
 V-241

DRG NO 5496A  
 ISS