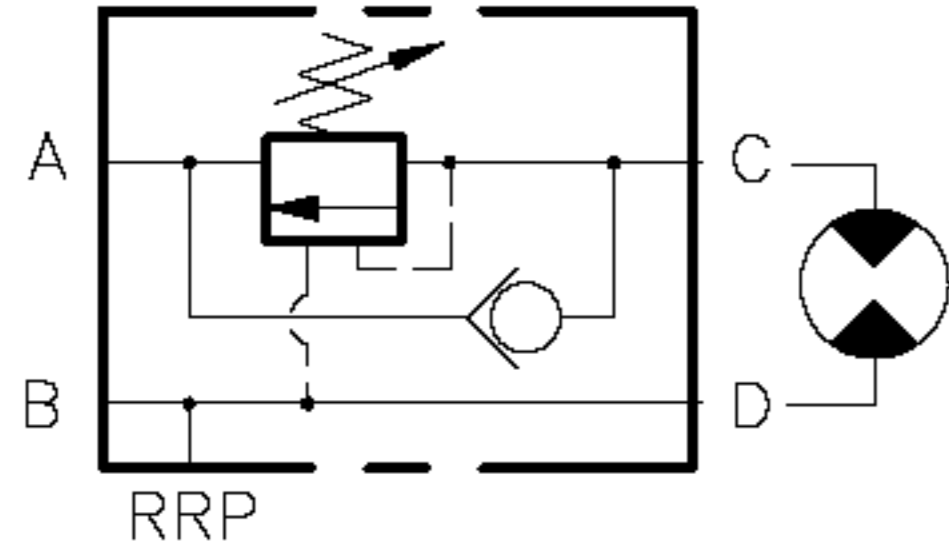
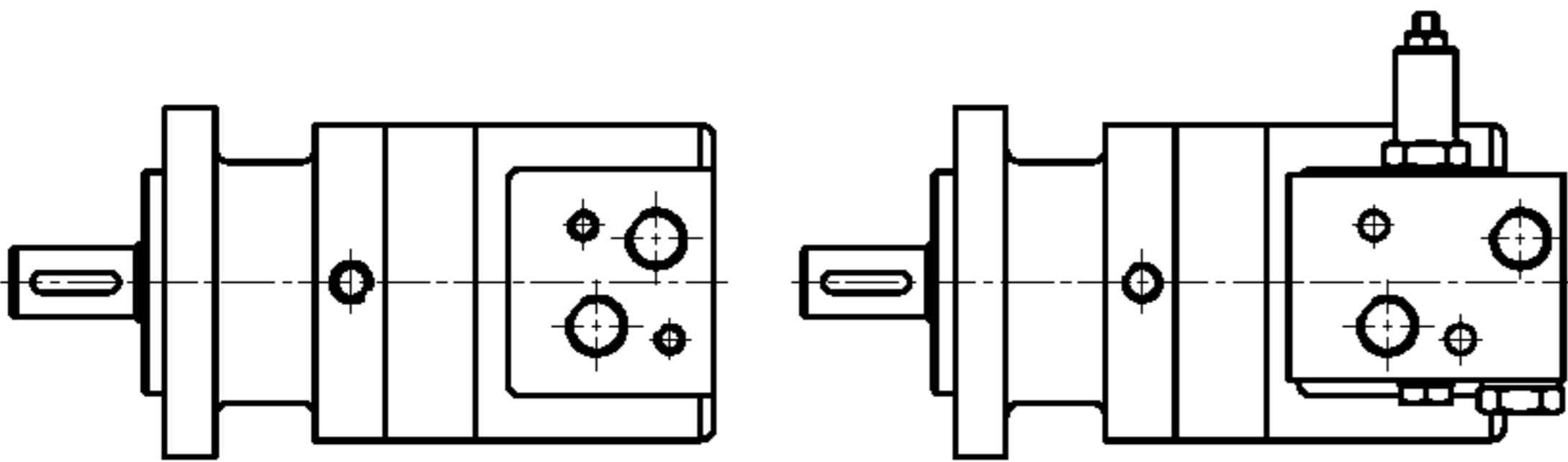
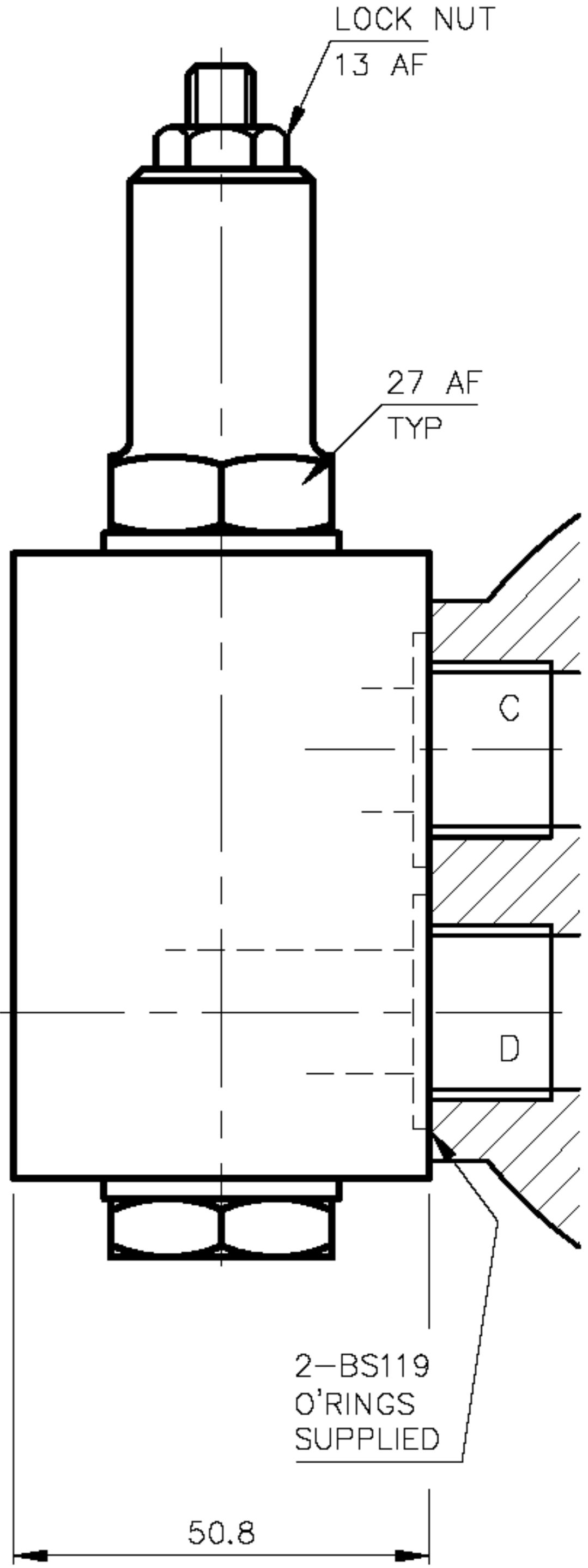
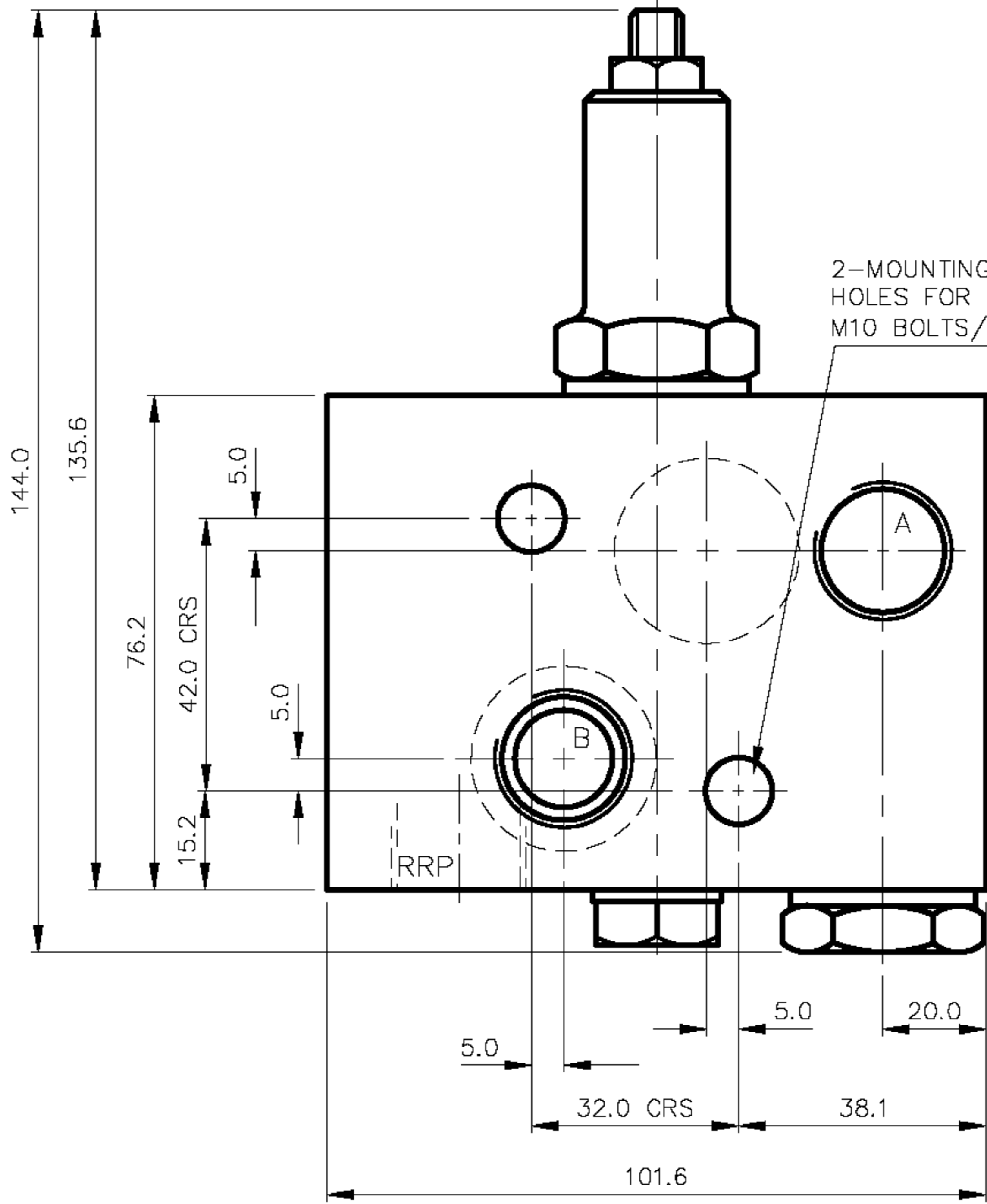


**MOTOR SINGLE OVERCENTRE VALVE**  
 WITH RATCHET RELEASE PORT  
 MANIFOLD MOUNTED  
**MAX WORKING PRESSURE 350 BAR**



VALVE ORDERING INFORMATION	
TYPE	PORTS
V-623-C	1/2 BSP (PL)

ALL DIMENSIONS IN MM



TO FIT THE FOLLOWING MOTORS
ADAN MSA & MSW TYPE
SAUER DANFOSS OMS
WHITE HYDRAULICS MS



MOTOR SINGLE OVERCENTRE VALVE  
 MANIFOLD MOUNTED

DATE: 17/02/04  
 ASSY: 6965  
 SCALE: 1:1

TITLE INSTALLATION  
 V-623-C

DRG NO 6966A  
 ISS