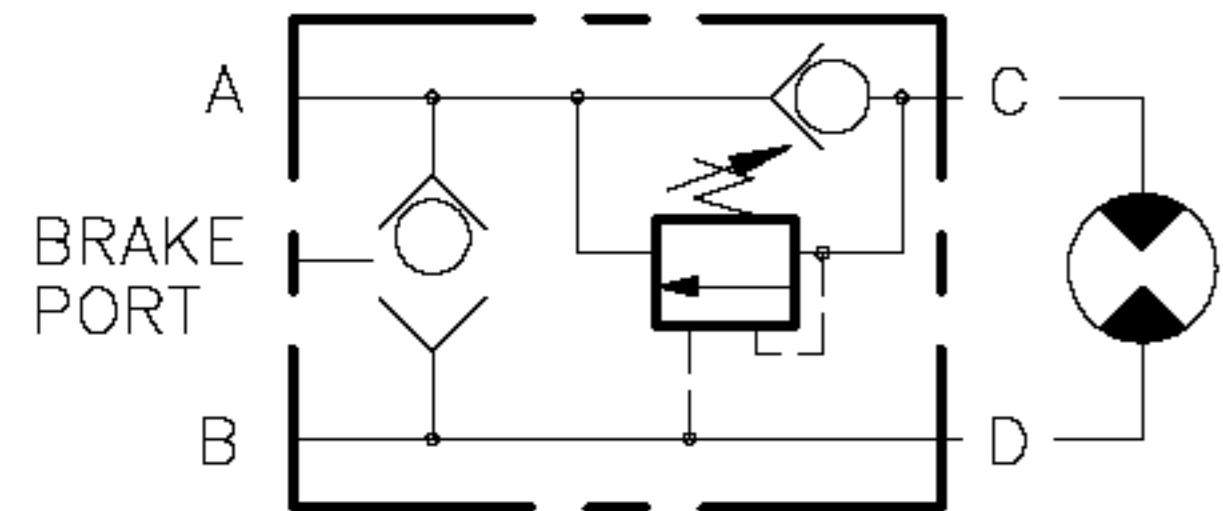
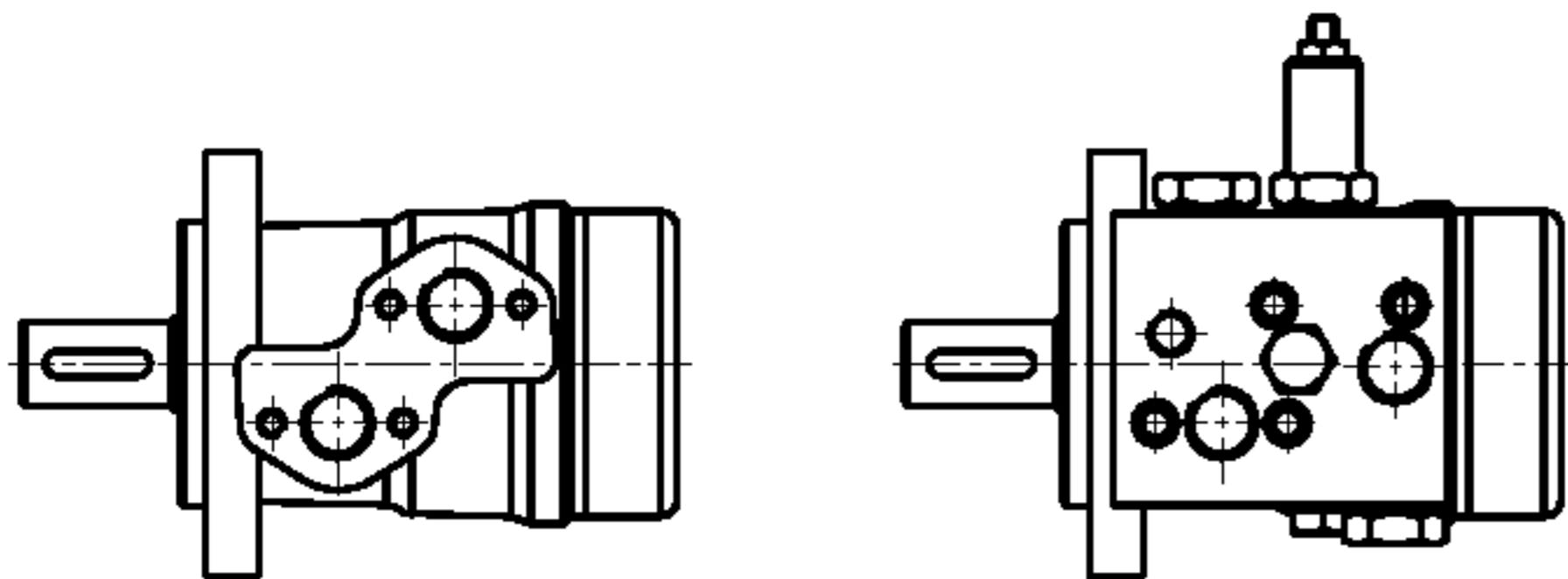


MOTOR SINGLE OVERCENTRE VALVE
 WITH BRAKE PORT
 MANIFOLD MOUNTED
MAX WORKING PRESSURE 350 BAR

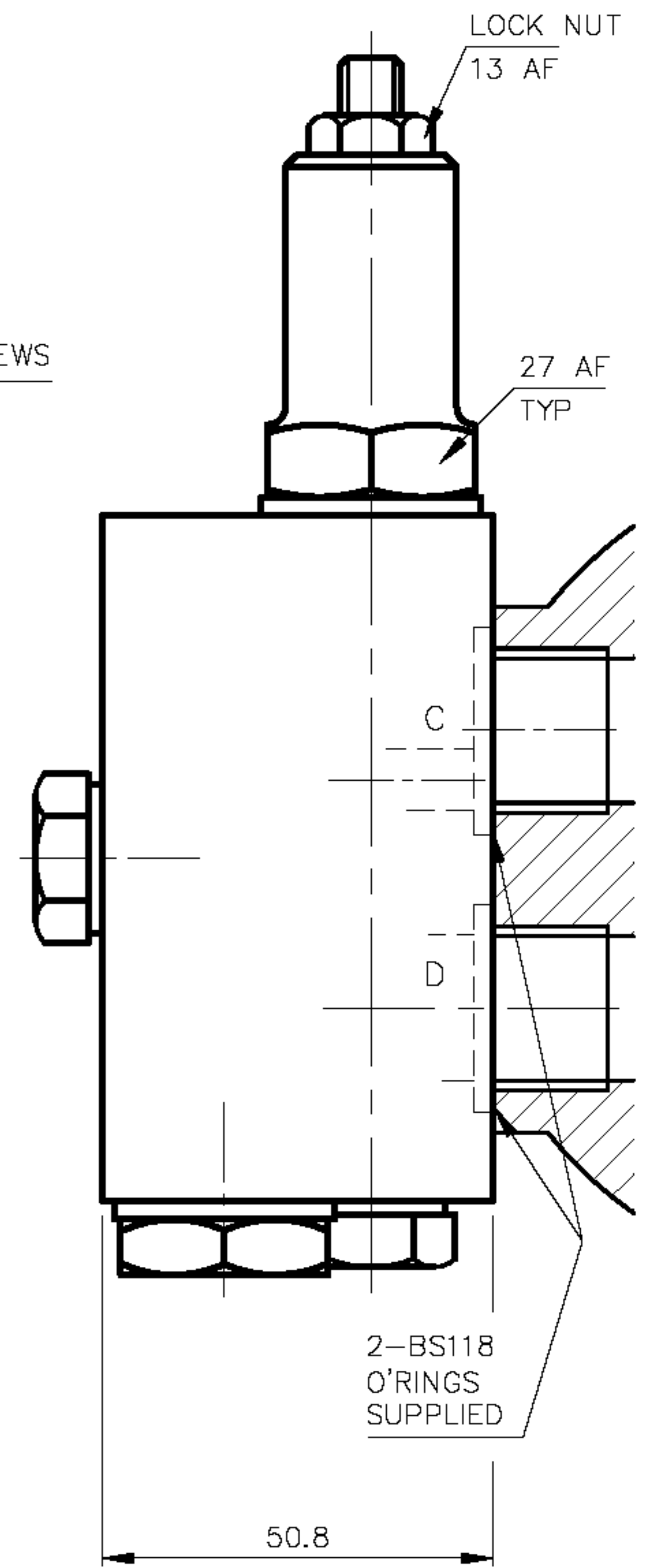
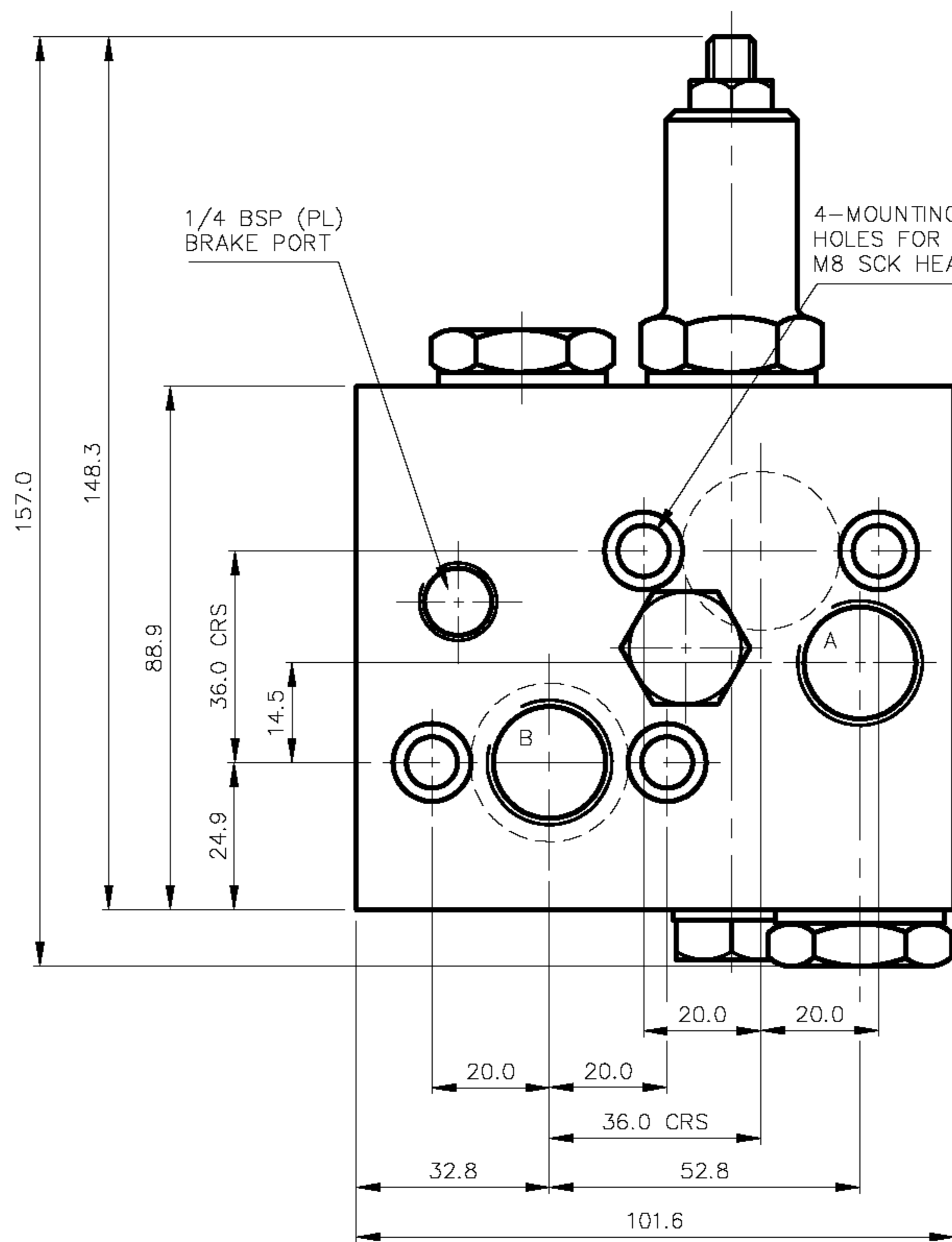
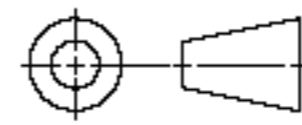


VALVE ORDERING INFORMATION	
TYPE	PORTS
V-622-C	1/2 BSP (PL)

ALL DIMENSIONS IN MM



TO FIT THE FOLLOWING MOTORS
ADAN AVMP & AWMR TYPE
SAUER DANFOSS OMP & OMR TYPE
WHITE HYDRAULICS MP & MR



MOTOR SINGLE OVERCENTRE VALVE
 MANIFOLD MOUNTED

DATE: 10/07/03
 ASSY: 6945 CAT
 SCALE: 1:1

TITLE INSTALLATION
 V-622-C

DRG NO 6946A
 ISS