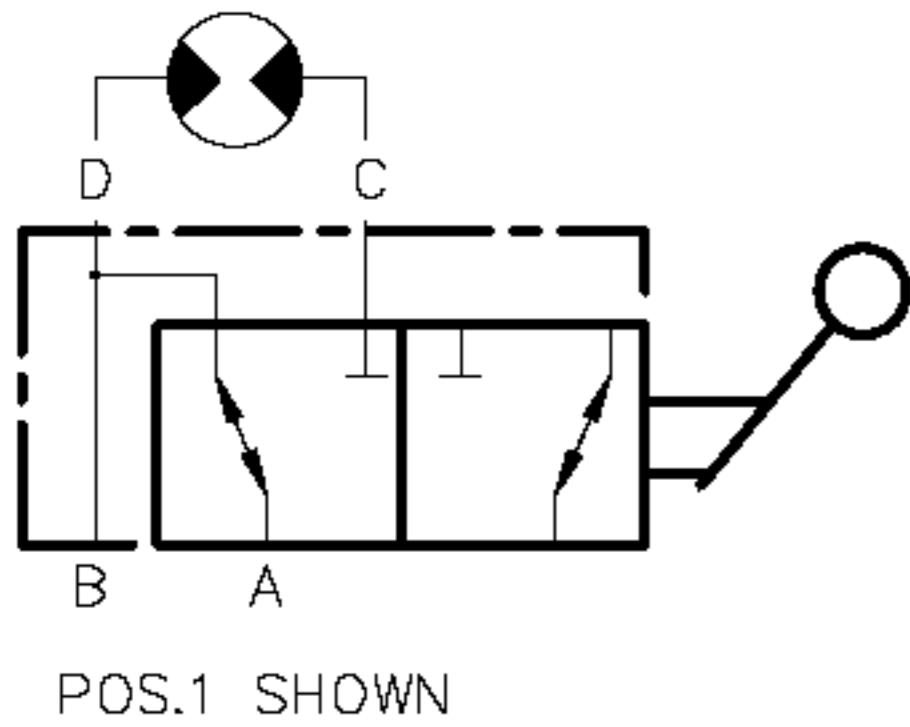
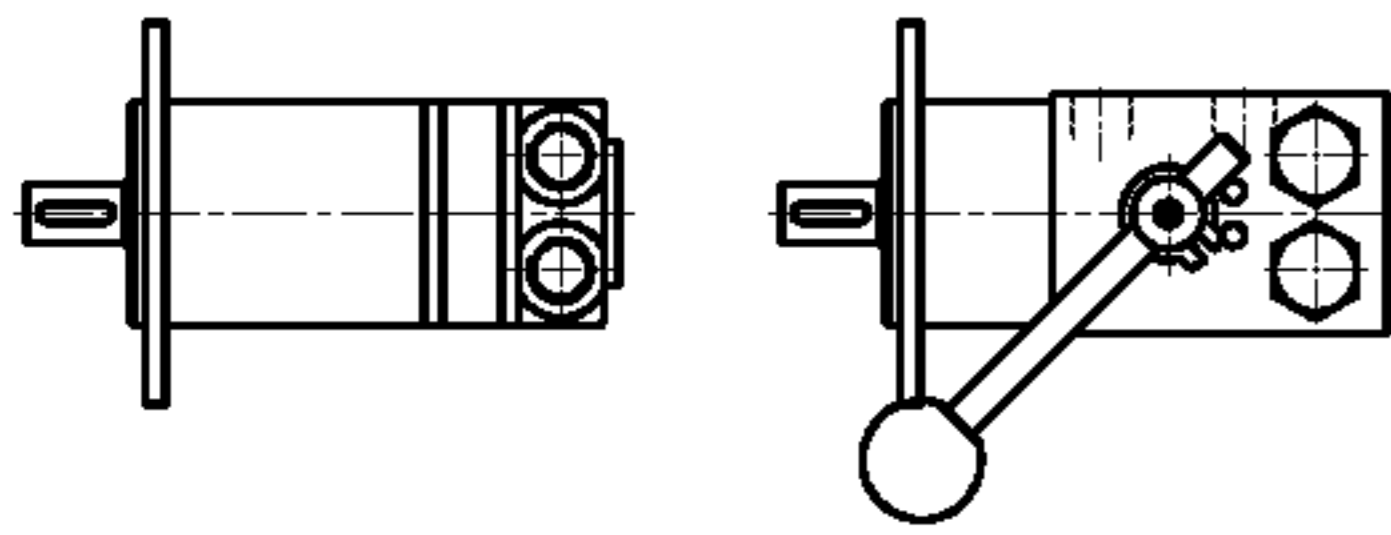


MOTOR ROTARY DIVERTER CUT OFF VALVE
 EXAMPLE V-638-□
MAX WORKING PRESSURE 210 BAR

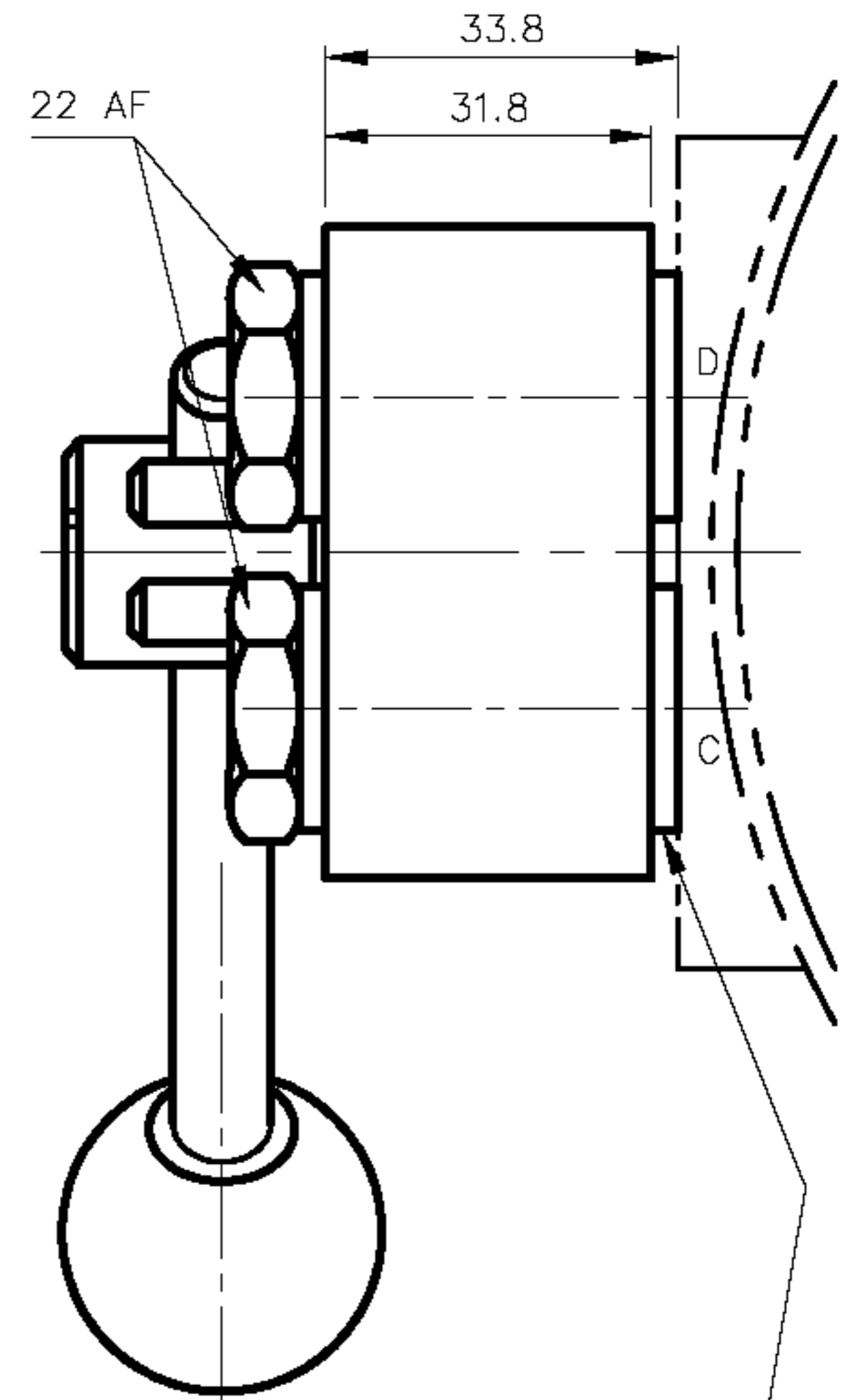
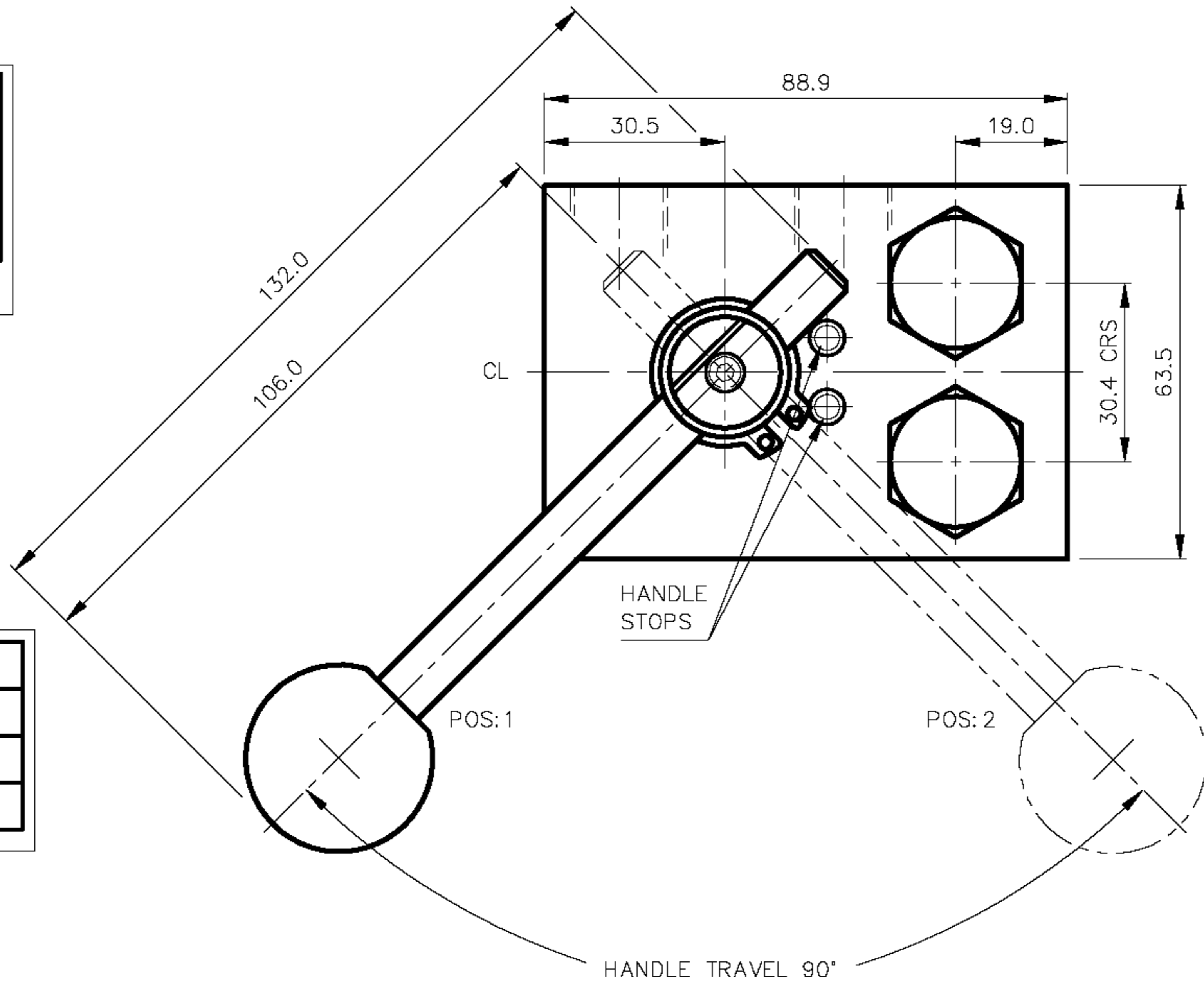
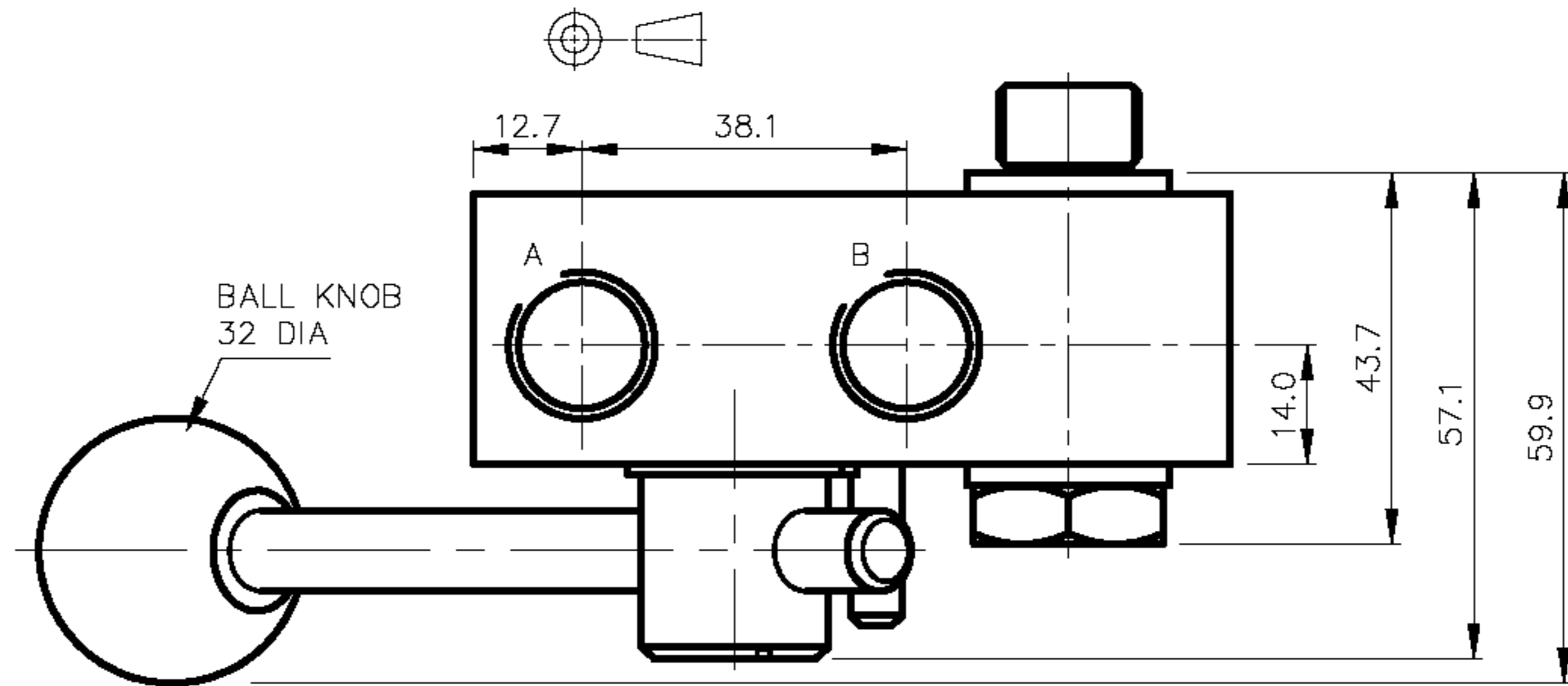


VALVE ORDERING INFORMATION	
TYPE	PORTS
V-638-A	1/4 BSP (PL)
V-638-B	3/8 BSP (PL)

ALL DIMENSIONS IN MM



TO FIT THE FOLLOWING MOTORS
ADAN AMM TYPE
SAUER DANFOSS OMM TYPE



2 x 3/8 BSP(PL)
BANJO BOLTS &
BONDED SEALS
SUPPLIED

BALL ϕ 32 WAS ϕ 25	06/11/03	C
HANDLE LG & POS CHANGED	10/08/96	B
ALTERATIONS	DATE	ISS



TYPE MOTOR ROTARY DIVERTER CUT OFF VALVE
 BANJO MOUNTED

DATE: 06/11/03
 ASSY: 7600 CAT
 SCALE: 1:1

TITLE INSTALLATION
 V-638

DRG NO 7601C
 ISS