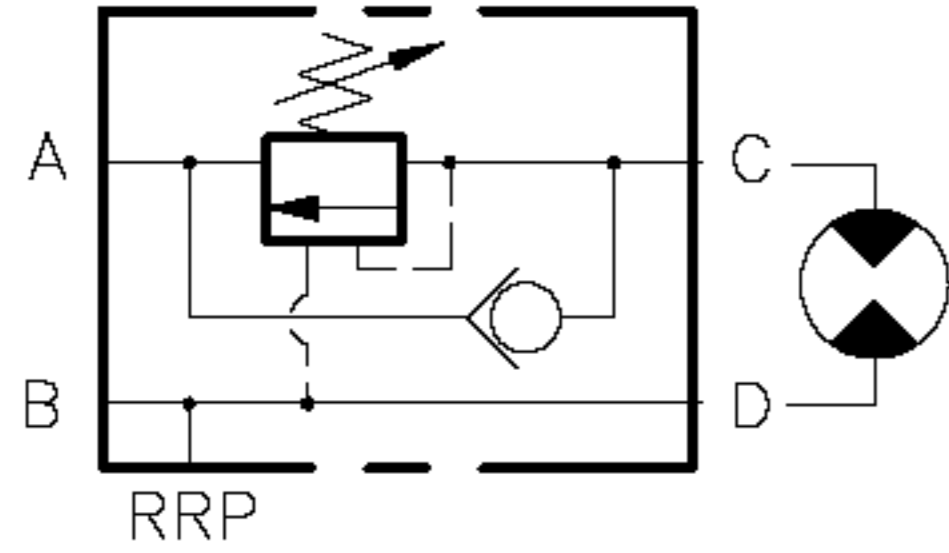
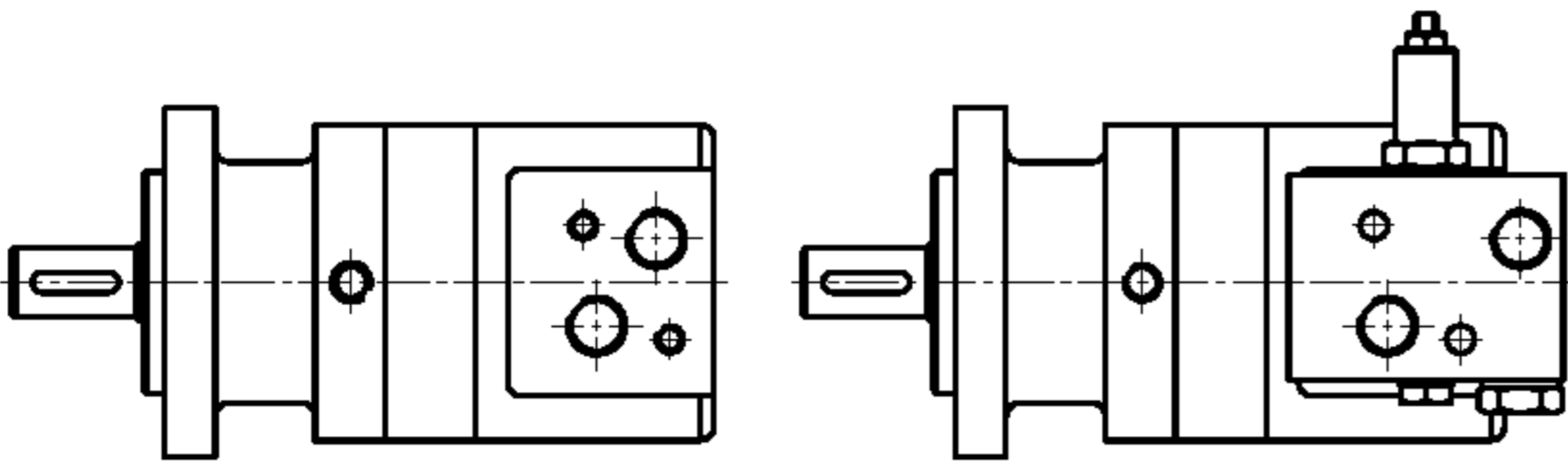
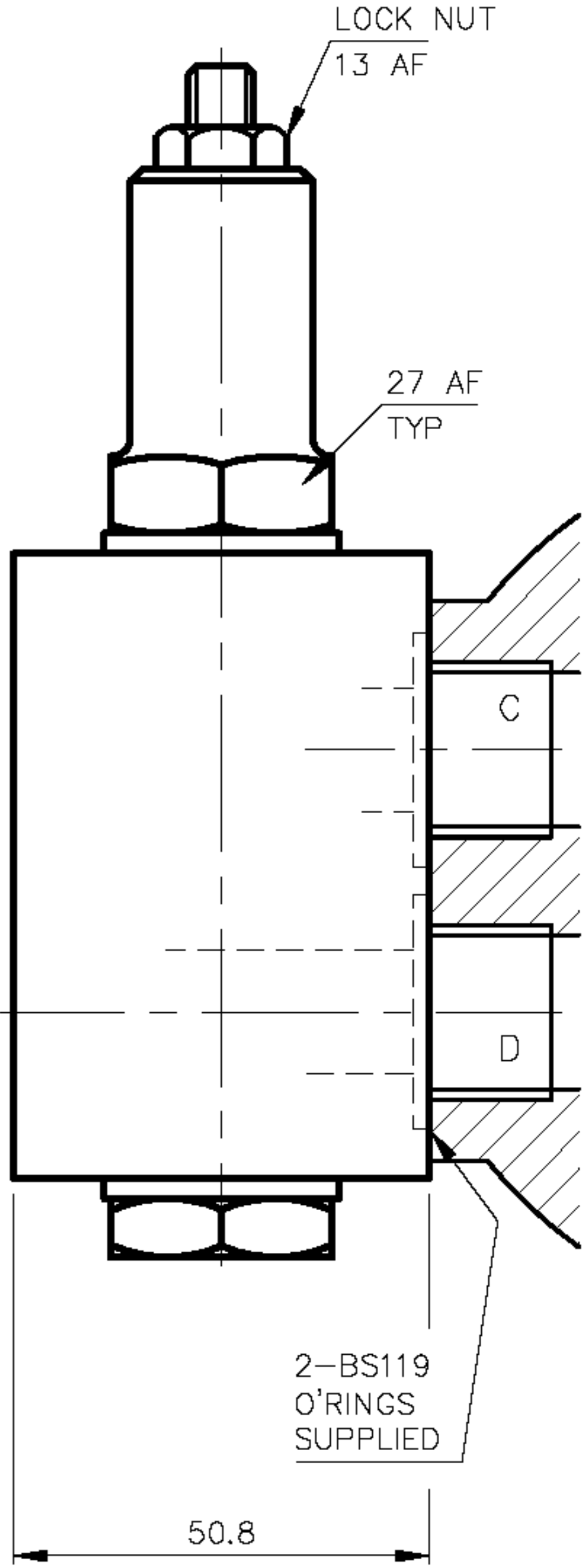
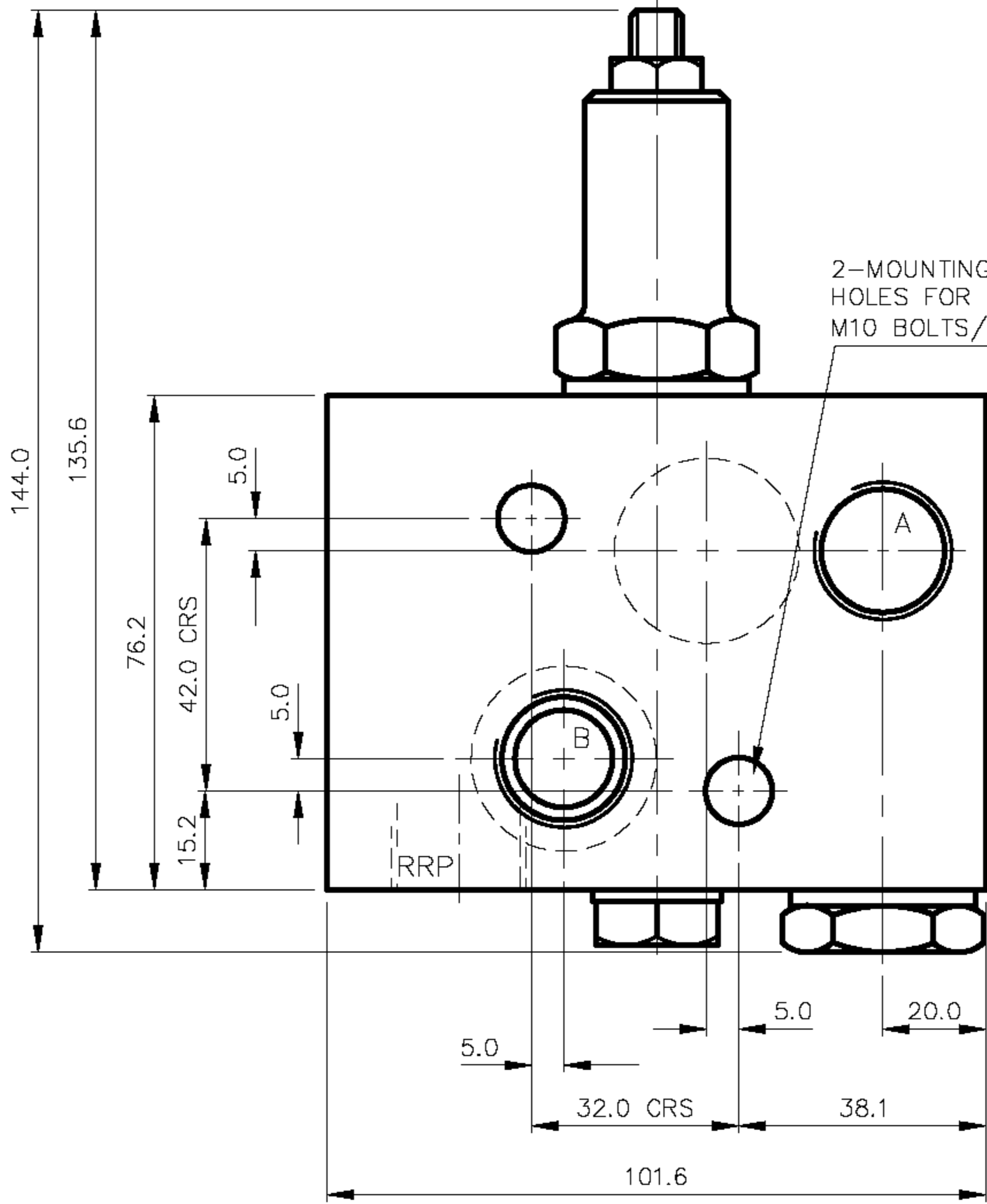


MOTOR SINGLE OVERCENTRE VALVE
 WITH RATCHET RELEASE PORT
 MANIFOLD MOUNTED
MAX WORKING PRESSURE 350 BAR



VALVE ORDERING INFORMATION	
TYPE	PORTS
V-623-C	1/2 BSP (PL)

ALL DIMENSIONS IN MM



TO FIT THE FOLLOWING MOTORS
ADAN MSA & MSW TYPE
SAUER DANFOSS OMS
WHITE HYDRAULICS MS



MOTOR SINGLE OVERCENTRE VALVE
 MANIFOLD MOUNTED

DATE: 17/02/04
 ASSY: 6965
 SCALE: 1:1

TITLE INSTALLATION
 V-623-C

DRG NO 6966A
 ISS