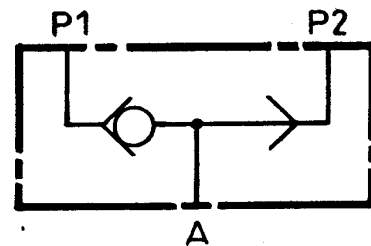


THIS VALVE IS USED WHERE A SERVICE FEED LINE HAS ALTERNATIVE MEANS OF SUPPLY, BUT ONLY ONE SUPPLY IS USED AT A TIME.

SYMBOL V-395

ORDERING INFORMATION	
TYPE	PORTS
V-395-C	1/2 BSP (PL)
V-395-D	3/4 BSP (PL)



MAX WORKING PRESSURE 275 BAR

ALL DIMENSIONS IN MM

HYDRAULIC ACTUATORS AND CONTROLS LTD

104 Maybury Road, Woking, Surrey GU21 5JL, England.
Tel: (01483) 762745 Fax: (01483) 765320